

West Lancashire Scouts Annual Report

CUBS CELEBRATING 100 YEARS



www.westlancsscouts.org.uk



Our President

Once again my congratulations to the young people and the many volunteers of West Lancs Scouts for all the great achievements recorded in this report. I am very proud to be your President. Your achievements certainly make it easy for me to promote the virtues of Scouting wherever I can throughout the County.

When I accepted the invitation to become President I did so because I saw Scouting not only as a Movement with great importance for young people but also because I saw it as a flexible and forward thinking Movement. Those impressions have been re-enforced during my term of office. The Movement has a great history, evidenced this year by the Cub Scout's centenary celebrations. What a great pleasure it was to attend the day out at Blackpool Pleasure Beach and see so many Cubs thoroughly enjoying themselves.

But it has also kept itself relevant. Listening to the activities and achievements of so many individuals at the Gold and Platinum and Diamond Award Ceremonies reflects that. It is also sustained by great companionship as witnessed for example at the Founder's Feast celebration. It is also in



West Lancs, very well led. I would like to pay my own tribute to Carl Hankinson as he completes his term in office. It has been an enormous pleasure to work with him and see his inspirational leadership in action. I am sure his energies will not be lost to West Lancs and I wish Steve Morton every success in taking over the mantle of County Commissioner.

This year marks the end of my own five years appointment as President but I have indicated my willingness to serve a second term and, if the County so wishes, I look forward to working with Steve to help ensure Carl's legacy is carried on.

Gail Stanley MBE, JP, DL

County President



Chairman's Foreword

When I was first induced into volunteering to help in Scouting, I was told my task was only to chair four meetings a year of the County Executive. Like many volunteers I soon found out there was a good bit more involved than what "was said on the tin". Writing the introduction to the Annual Report though is one of the small extras which over the years has brought a good deal of pleasure. It really is inspiring to read each year of the achievements in West Lancs and to reflect on the enormous benefits and pleasure brought to so many young people and on the tremendous efforts made by so many volunteers who are prepared to do that bit extra.

The growth of the County for a twelfth successive year features strongly in the report and rightly so, it is a great achievement. It is right to congratulate the leadership in the Districts at all levels which has helped to achieve this along with the excellent support from the County Development Officers. The efforts put into recruiting and enthusing volunteers cannot be under-estimated. To me though, the numbers are only important in that they show that we have a product, a programme of adventurous activities, which is attractive to young people and for that congratulations to all the Leaders guiding and delivering that programme. The success in increasing



the numbers camping, the range of activities on offer through skilled volunteers and the largest international programme ever in West Lancs are all reported and speak volumes for the excitement available from the Scouting programme.

2016 has also been memorable as the Centenary for Cub Scouts. Along with the many local events, the great Cub Day Out at Blackpool Pleasure Beach deserves a special mention. It reflected well on West Lancs to be seen to be taking such a lead in the Region and great thanks are due to the Cub Scout Section Leadership and to the host District Blackpool for setting things up with the Pleasure Beach and for the enormous efforts which went into the organisation of the day.



Part
of the

County's commitment to

the programme available for young people is its ambition to have the camp site resource at Waddecar comparable with the best Scout camp sites in the County. This year has seen another significant step in getting the infrastructure right with an extremely well managed project to provide a new toilet block. This brings the investment by the County in Waddecar close to £1m. Delivering the next stages of the ambitious plans for Waddecar are going to be even more challenging but this is a sound start. I have heard the comment that the new facilities are not themselves going to increase the site usage. However in an enthusiastic report from a local headmaster after using the site for a school camp for the first time, the quality of the toilet block facilities were one of the first things mentioned. From another group, a Liverpool teenager visiting the site for the first time was overheard saying that the facilities in the block were "well good".

The Scouting Museum at Waddecar enhances the standing of the site and we have to reflect with great sadness this year on the passing of Ron Loomes. Those of us with relatively short memories in West Lancs were reminded at his funeral of the service given to Scouting by Ron over many years. But it was his cheerful and helpful presence at the museum each week that many of us will remember him by. He is a great loss and our deepest sympathies are extended to his brother Michael.

Of course 2016 is going to be remembered as the year in which Carl Hankinson completed his tenure as County Commissioner. The report rightly contains a tribute to Carl and gives a good account of his achievements. My own summary is to say that Carl combined excellent management skills with a great enthusiasm for Scouting and the combination of the two has brought enormous benefits to West Lancs

over the past ten years. I have been enormously impressed by the way he has worked and his achievements. It was his

vision which led to the project to produce a strategic plan for West Lancs which set out what was needed to implement the Scout Association's 2018 Vision. It was his skill to involve his Team in such a way that the resulting plan was not just his but owned by the County as a vision of what was needed. I think this report reflects the progress made in each of the key areas including growth, youth shaped, diversity and involvement in the community. One of his great attributes is his encyclopaedic knowledge of people within the County. In a volunteer movement people are always going to move on and Carl's skill has been to find the appointments to maintain a strong management team. Thus while it is tempting to talk of the end of an era, I feel that the strength of the team, the improvements in governance and the plans being implemented are, together, Carl's legacy. With that legacy, we will instead be talking with Steve Morton of building on an era and that is a great tribute to Carl.

Finally I would reflect that one of the other extras of being County Chair is being asked to preside over the increasingly frequent Chief Scout's Gold Award ceremonies. It is a great tribute to the achievements of our young people and their Leaders that these ceremonies are needed so frequently. We usually use these occasions to suggest that the Gold Award could lead on to greater things. Shortly before sitting down to write this introduction I was presented with an example of how true this can be. Joe Clarke had to the surprise of many won Olympic gold in canoeing. It was reported that his involvement in canoeing began through being a Scout. Here is to the continuation of the adventure and to many more Gold Awards wherever they may lead.

Mike Simpson
County Chairman



County Commissioner's Report

I've never been prouder of the range and quality of achievements in our County than over the past 12 months. It's been a year of change and challenges and yet we've come through it stronger, and in better shape to serve our community in Lancashire.

Our annual membership census can be a nerve-racking time as it is a proxy for the quality of what we do; we know young people vote with their feet and thus unless our offer is attractive, they leave us.



Therefore it was with a sense of relief and huge pride that we marked a milestone in a history – West Lancs Scouts is

bigger now than at any time. Our 12th successive year of growth took us to a membership of near 13,000 (full details are shown on the inside back page). Everyone, and I mean everyone, should be delighted in this achievement. Young people get a better start in life if Scouting is part of it. For me, this is why growing our membership is our most important measure of success.

The perennial topic of quality versus quantity, and whether we push too hard for quantity is alive and well in discussions. I'm clear that without an excellent youth programme being offered by sufficient adult volunteers with great support, then

we'll never sustain or grow our membership. I'm therefore particularly pleased to record how much effort we've invested into the youth programme refresh. This welcomed update of our youth programme is the most significant for 15yrs. Our programme remains a progressive one and looks to ensure more Scouting is outdoors, and young people develop their leadership skills. Our own 'Commissioners Challenge' was themed around 'outdoors' and over 4,000 took part in it. Our County Nights Away competition was won by Preston District and the total number of nights away increased by 35% compared with the year before.

Added to this is the most varied overseas expedition programme we've offered, with more young people travelling overseas in summer 2015 and that's now been trumped by our 2016 summer programme. Social media is the source of commentary, videos and images uploaded from Japan, Mongolia, Nepal, Austria, the Alps, The Picos Mountains, Canada, Hungary and Poland. I'm very envious!

We've made great strides to ensure our membership is inclusive and reflective of our community. With great pride I attended the AGM of 10th Fulwood to see first hand how it's thriving. Fatima, our GSL, talked about the wonderful leadership team and thanked the District for the support they've provided over the past year. Amjad appealed for more help to address the waiting list of





All of this adds a vibrancy to what we do, and is beginning to change West Lancs for the better. If you don't believe me, ask the four Explorer Scouts who were involved in

the selection of my successor!

70 young people for whom we are currently unable to provide Scouting. The whole atmosphere was welcoming and great fun. That fun was matched by the team of us who attended Blackpool Pride. For the first time our County was represented at this festival. We received a warm welcome from the crowds and other groups and provided a very visual message that Scouting is for all. We've more to do, but we should be proud of these, and many other achievements.

Enshrined within our 109 year heritage is to ensure young people develop their leadership skills and that our adult leadership remains in tune with the needs of our current youth membership. The national innovation to create a 'Youth Commissioner' role was adopted by us before any other County. Ollie now has a great team including Sarah & Jack as deputies and 6 District Youth Commissioners (his report is on the next page). They've been visual and active on a number of County events, and I've seen a huge improvement in engagement with our young

Talking of which, Steve will be a great County Commissioner for West Lancs. I wish him all the best and he has my full support. After ten years as CC I know the ups and downs but it is a very rewarding role, made easier by having first class people around you. I've seen a number of changes in our senior role holders, whether they be the County Team or Executive Officer's, or the wider Team. However, one consistent thread through the decade and through all of them is they freely give their time and talents to help other people. There's an excellent atmosphere and I'm hugely proud of the quality of what we achieve. I've been incredibly lucky to have been supported by a wide range of people and hope that I've lived up to



my Scout Promise and 'done my best'. I'd like to thank you all for so much. But I'd like to break my own rule and mention one person by name, and that is my wife Dawn. These roles become a joint commitment as you often end up not doing what's required at home. I've been so fortunate to have Dawn's support and the County has been fortunate she's allowed me to do so much.

So although I'm in a reflective mood, my excitement for the future of West Lancs remains. Without a doubt this is a great place for us to do our Scouting. We still have much to do if we're to realise the ambitions in our County plan and we can do more for young people in Lancashire. If we remain focused, flexible and driven we'll achieve all that we want to, and have a whole lot of fun along the way.

Carl Hankinson
County Commissioner



people. In autumn, Ormskirk District are trialing a 'Young Leader's Takeover Week' where all weekly programmes will be delivered by the young Leaders in the Section and Lonsdale District are recruiting young Leaders to their District Teams.



Youth Shaped Scouting in West Lancs

2015 was the year that youth shaped Scouting was re-introduced to West Lancs Scouts. I say reintroduced because youth shaped Scouting is rooted in our Movement's values and traditions. When Scouting was founded, young people were given significant responsibility and regular opportunities to develop their leadership and communication skills, and their confidence.

In a highly-competitive world it is more important than ever that we



continue to offer these opportunities to young people in the 21st Century.

We need to be careful that we don't expect too little from young people in Scouting.

Over the past year we wrote and approved West Lancs Scouts Youth Shaped Vision for 2018. We saw the appointment of six District Youth Commissioners (& Deputies) who will champion youth shaped Scouting locally and support adult volunteers to ensure the successful implementation in every Section. Similarly Jack Bullon and Sarah Barnes were appointed as Deputy County Youth

Commissioners to support the work to deliver our County's Vision.

By hosting and attending events, visiting forums and Sections and meeting young people and adult volunteers all around West Lancs, knowledge and understanding of youth shaped Scouting has developed. 'YouShape Week' in February inspired many Sections that had not embraced youth shaped Scouting previously to give it a go, and were surprised by its success!

In 2015 some of our County and District events, international trips and also District Teams all saw Explorer Scouts join their leadership teams.

By 2018, we hope that every programme and every decision in Scouting will be shaped by young people in partnership with adults. We can also use peer leadership (Sixers/ Patrol Leaders etc.) in every Section to provide leadership opportunities to young people. And it's fine if mistakes are made along the way!

In a few years time I hope that we don't have to talk about 'youth shaped Scouting' but instead that we can just talk about 'Scouting' because listening to young people's views and ideas and giving young people leadership opportunities wherever possible is integral to all we do.

Here's to another year of great progress!

Ollie Wood

County Youth Commissioner



Training Sections

"How quickly a year goes within the Beaver Scout Section", says **Cath Hargreaves** ACC (Beaver Scouts). In the last 12 months we have seen changes to the Balanced Programme and, following launches in the Districts, our Colony leadership teams have embedded the new challenge and activity badges into their programmes with gusto. It's been great seeing what fantastic ideas they have had.



Beavers Scouts is the Section for boys and girls aged 6 to 8. In West Lancs we have 2800 Beavers in 166 Colonies

We saw our first County Beaver Camp at Waddecar, 'The Big Beaver Camp Out'. It was great to see both the Beavers and their Leaders camping and having a great time.

Some of our Colonies invited the Jamboree Unit to come to a Colony night and deliver "Japan in a Box" where they learnt about what the Explorer Scouts were going to be doing whilst in Japan during the summer. The Unit also attended 'World Wide Waddecar' which is a firm fixture in the Beaver and Cub Scouts calendar with the aim of supporting linking within the two Sections and is a great way to teach the Beavers about international Scouting.



A new event in the calendar was our Living Library fun day – the bases were themed around children's literature and it was amazing to see how the Districts embedded the themes into their activities. The Beavers had a great day and this is now going to be a firm favourite in our calendar.

Our annual quiz was won by the 36th Blackpool who are now the custodians of the trophy – who will win this year???

Finally we held a Leader's Information Day in February. These had disappeared off the calendar for a few years but we decided to try the event again and it was a great success. Leaders came to make new contacts with providers, learn about the Young Leaders scheme and youth led, and had the opportunity to ask the County Beaver Team any questions they had.

I'm very proud to be Assistant County Commissioner (ACC) Beaver Scouts and to see the hard work and dedication our Section Leaders put into their Colony nights and a testimony to that is that this year across the County there were 685 Bronze awards presented and a fantastic 2,800 Beaver Scout nights away were undertaken – what will next year bring?

Phew and we wonder why we need a sit down and a cup of tea!



CUBS CELEBRATING 100 YEARS

It has been another amazing year for Cubs!

says **Anne-marie**

Fisher ACC (Cubs) The County Cub Team of Bev McMullan, Michael Tax, Andy Walton, Tom Gibson and myself have never visited or held such amazingly mad, challenging, testing

cubs 

Cub Scouts is the Section for boys and girls aged 8 to 10.5. In West Lancs we have 3213 Cub Scouts in 171 Packs

adventure days, travelling around the World at 'World Wide Waddecar', nature hunting at Naturalist day and the ever popular Santa Sleepover, we really have seen it all this year.

2015 was the year of Adventure for Cubs all over the Country; we were encouraged to stretch our imagination and ambition with our adventures...and in West Lancs we certainly did! Every Cub was challenged to attend at least one camp, not a cosy indoor one but a under the stars one (well, in a tent!). Most Cubs attended more than one, also helping them to complete elements of this Year's Commissioner Challenge. Well-earned Cubs!

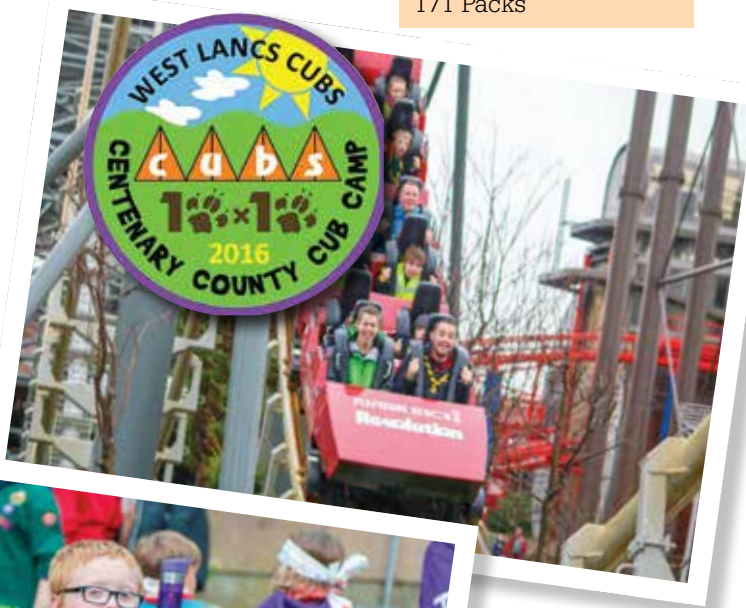
During this year the Cub Scout programme was refreshed, bringing new and more exciting challenges and many Groups have already achieved many of these awards, there is nothing more exciting for Cubs than to earn another badge for an activity that they have challenged themselves to achieve. Again, well-earned Cubs!

And so we headed into 2016. And for those of you that haven't noticed, 2016 is the Big Birthday for Cubs!

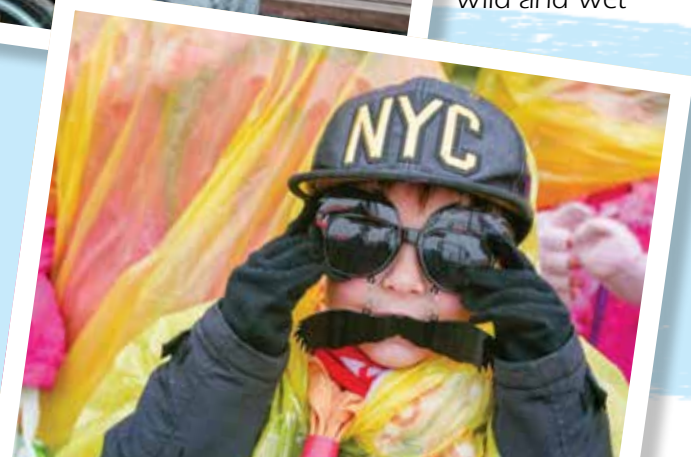
100 years young and after months of planning, plotting and generally running around like mad people, the Team were ready for the years events to begin. West Lancs Cubs were chosen to represent the Region at the "Cubs100 Launch" at London Zoo, joining Cubs and Leaders from all over the Country! Big thanks to Michael and Nicola from Blackpool who trained down at the crack of dawn to ensure the Cubs had the best Sleepover.

Our first West Lancs day was 'Snow Day', skiing at Rossendale and we were very lucky when the real snow fell on the fake snow, it really was 'Snow Day'. Over 100 Cubs had great fun and learnt a new skill.

We have planned to hold an event every month for the year and our February event was kind of special. Hosted by West Lancs in sunny Blackpool, we were given exclusive use of Blackpool Pleasure Beach. The resort has never allowed exclusive use to anyone before, but it did to us. 8000 Cubs took over the park for the day and although it was a tad damp, there was nothing but smiles and laughter all day. This was the first Regional event that we have held in the Region for some time and it brought together the nine Counties in the Region.



and fun days and camps as we have this year! From Outward Bound sleepovers, Wild and Wet



Wayne Bulpitt, Chief Commissioner, joined us for the day, along with lots of County colleagues and our President, Gail Stanley, braved the wild weather to visit us. A massive thanks to all that came and had fun along with the Cubs.

An enthusiastic **Rob Millington** ACC (Scouts) tells us that the last year has been a great year for the West Lancs Scout Section;

March saw the first new activity of my term in the County Calendar for the Scout Section, with 60 young people enjoying a weekend at Waddecarr on the 'Troop into March' event, in which they worked as a team with their Leaders to achieve different challenges on the bases and get an insight into young people working with their Leaders to shape their activities.

April saw 30 teams battle it out over the Bowland fells in the Bowlander competition. May saw 1000 Scouts attend the County Rally at Waddecarr, enjoying many activities from Archery to Crafts, and Volleyball to Climbing. Both

SCOUTS

Scouts is the Section for boys and girls aged 10.5 to 14. In West Lancs we have 2555 Scouts in 150 Troops



established events were excellently supported and enjoyed by all.

The Section has seen a slight increase in membership of 0.83% (2534 in 2015 to 2555 in 2016) since last year across 150 Scout Troops in the County. We have seen an increase of 11.57% (642 in 2015 to 717 in 2016) in our female membership in the Section, which is an excellent achievement across the County.

This year has also seen the programme go through a refresh, which has been greatly received by the Scout Troops and all are now

running the refreshed programme, helping all young people achieve their Chief Scout's Gold Award. Over the year we have presented the top award to around 300 young people, for which we had to add an extra presentation day, holding two presentations in a single day at The University of Central Lancashire. This was an excellent day that saw 120 young people awarded their Chief Scout's Gold Award.

The Section continues to go from strength to strength and I would like to pass my personal thanks to all those involved in the Scout Section.

Hugh Miller ACC (Explorers) tells us that the Explorer Section expanded once again with new Units opening in Preston.

The year saw a great deal of activity, supporting activities and events outside the Explorer Section with members from Fylde running numerous activities for schools and other youth groups at their District Headquarters, groups of Young Leaders providing energetic support for major Beaver, Cub & Scout Section events and Explorers across the County providing support for civic, sporting and charitable events within their communities.

EXPLORERS

Explorer Scouts is the Section for young people aged 14 to 18. In West Lancs we have 986 Explorer Scouts in 56 Units. Of those 469 are in the Young Leaders scheme



The Section continued to work closely with both the Scout and Network Sections to encourage Members to move in and move on within Scouting. New initiatives during the year included Explorer Scouts running the Patrol Leaders Forum at County Rally, providing great links with the Scout Section and Network taking a greater involvement in organising activities during '#takethelead'.

Julie Paton ACC
(Scout Network)
explains that it has
been a year of

network

Members aged 18 to 25 can opt to join the Scout Network. In West Lancs we have 77 Network members in addition to the 421 having adult appointments as Leaders or assisting in Groups.



change and celebration for Scout Network. We said good bye to Network as we knew it, with



the Section transitioning from a County to District provision, bringing with it a greater support network of Leaders and opportunities across the Districts.

Easter was celebrated in style with over 350 Network Members across the Country joining us at Great Tower for The Network Gathering, which once again excelled expectations as all enjoyed a weekend of activities, live music and the

infamous Sunday games.

September saw Network Members take time out from their busy leadership roles and join forces with other District Networks across the County to test their surfing skills and participate in an epic game of slip-n-slide kickball at the beach themed 'Connected'.

The climax of the year was celebrating and congratulating the hard work and commitment Network Members

had put into gaining their Queen's Scout Award. Their achievement was heightened by the local Queen's Scout Award presentation and attending the Queen's Scout Parade at Windsor Castle.



Support Sections

International

2015-16 was once again the biggest year for international Scouting by West Lancs yet, recalls **Steve Morton** ACC (International).

The year began with a visit by Groups from Chorley and South Ribble to Belgium, which set the scene for an exciting year. This was quickly followed by the annual County Explorers visit to the Ardennes, however once the summer hit, the scope widened greatly!

Groups and Districts visited Kandersteg, Harlem Jamborette (Holland), France, Switzerland, Austria, Serbia and Hungary. County visits saw our Members travelling through Sweden by canoe, walking through Hungary to complete their Explorer Belt Award, volunteering at a school in Cambodia, and canoeing and climbing in Greenland.



Then there was the World Scout Jamboree, which saw our Unit meeting Scouts from around the world, and experiencing Japanese life whilst many of our volunteers also visited China, Hong Kong, Thailand and Dubai following the Jamboree.

Scouting visits by Groups, Districts and

Adult Training

Behind the scenes of the everyday adventures going on around the County, Leaders are working hard undertaking all sorts of training, both mandatory and optional, to ensure they can provide the fun challenges their young people enjoy, explains **Fiona Jackson** ACC (Adult Training).

With the refresh of the programme and the associated changes to the modules, the Training Team have been busy reviewing and updating the training provision. We are fortunate in West Lancs to have a full team of Local Training Managers, Course Directors and Trainers



who are absolutely dedicated to developing and maintaining the best training experiences possible.

Supporting those delivering the training are numerous training advisors and administrators. The task of keeping track of training records has been hampered with the change to the new system, but persistence and resilience has borne through and we can now look forward with confidence that the efforts of Leaders are recognised, records are up to date and Wood Badges are being progressed.

It has been a privilege to lead the training team over the last seven years or so and I thank them all for their support in that time. I know they will give just as much support to Joan Swan as she takes on the role with great enthusiasm and vigour and I wish them all the very best for the future.



individuals continued through the autumn and winter, ending with a

visit to Kandersteg in the Swiss Alps by Eccleston Scout Group. Altogether nearly 450 of our Members travelled abroad during 2015/16, and spent over 4,000 nights away abroad.

Back here at home, our global programme continued to build, starting with ten teams from the County taking part in the Shelterbox Scavenger Hunt around Liverpool, learning more about disaster relief, raising awareness and funds. 2015 saw the introduction of the new International Affairs and Global Issues activity badges, and the World Challenge Awards as part of the programme refresh. This

opened many new opportunities for our young people. The Global Programme Support Team helped Groups introducing the new awards, provided leader training to help Leaders run exciting global programmes and international visits, and contributed to the very successful World Wide Waddecarr event for Beavers and Cubs.

After nine glorious years my term as ACC International comes to an end. May I thank all the Leaders and Global Team members who have helped develop and deliver so many amazing opportunities to our young people. I am sure under Chris' leadership West Lancs international will go from strength to strength.





Paul Sanday ACC
(Adventurous Activities)
has always been proud and amazed at the adventures that our member's young and old achieve within West Lancs Scouts. The adventurous activities programme continues to thrive with both District and County led adventures and local Unit based adventures offering a vast and unparalleled choice for

our membership.

2015 saw yet another set of successful overseas adventures with the annual Explorer led Ardennes trip, the full blown mountaineering expedition to North East Greenland and a self-led Unit trip to Kandersteg in the Swiss Alps for a multi activity adventure. All of these events offer safe, exciting and thrilling experiences that will never be forgotten by those taking part. 2016 and onwards will continue this theme with the choice of new

destinations being truly awe-inspiring!

Closer to home, our UK based adventures continue to be well received and are always



Activities Team

going through minor change to ensure they are tailored to our ever changing membership needs. Our Activity Leadership team continues to grow its skill base gathering more permitted Leaders and covering more activities. This enables us to continue to support our periodic events for all of our Sections, such as Bowlander, the Mountain Adventure Challenge and our sectional County Camps.

Key partnerships between West Lancs Scouts and local activity groups and centres enable Scouting activities and commercial activities to share resources, operate in synergy and promote Scouting in a great light. Going forward we will continue to expand our activity portfolio to ensure that West Lancs is offering more diversity in safe adventurous activities.



Major & Overseas Events Group (MEG)

The Major Events Group continues to be the conscience of the County, monitoring and ensuring that no County overseas event, or large UK based event, incurs any financial or reputational risk to the County. Within this, MEG generates and monitors advice, policies and procedures to ensure that the County maintains its annually audited conformity with British Standard 8848 (Specification for the provision of visits, fieldwork, expeditions, and adventurous activities, outside the United Kingdom). This provides a degree of assurance to the County, and parents/guardians of participants, that such events are undertaken to the safest possible standards. With the 2014 update of the



Standard, and after six years of accreditation to BS8848 West Lancs Scouts continues this accreditation on the basis of self-assessment. This puts a greater onus on Leader Teams and Responsible Commissioners to ensure and evidence conformity.

MEG met on 4 occasions during the year to monitor the finalisation of the 2014/15 projects, monitor progress with the 2016/2017 projects, and suggest and support ideas for the future. MEG will certainly have the longest agenda of any meeting in the County – now running into 33 agenda items, covering all international trips from closing down those completed, to



monitoring overseas trips in the planning, and those to come!

During the year MEG reviewed and closed down Red Rose 2014, the 2014 Ardennes Adventure, the Norway, and Nepal (Xmas 2014). Six 2015 trips were monitored by MEG.: Ardennes Adventure (Explorers, Spring 2015), NE Greenland (Members over 16, Summer 2015), Explorer Belt Hungary (Older Explorers & Network, Summer 2015), Project Cambodia Community Service (Older Explorers & Network, Summer 2015), Wilderness Adventure Sweden (Summer 2015) – and of course the 23rd



World Jamboree in Japan, together with a large contingent travelling out to help on the Management and International Service Teams (Summer 2015). Well over 200





members representing West Lancs Scouts overseas this summer..... not counting the trips going out from the UK that have been organized at District/Unit level.

Plans are well underway for 2016 : Ardennes Adventure in May, followed in summer by Go Zellhof (Austria, Scouts), A Mongolian Journey (Explorers, Network & Leaders), European Regional Jamboree Poland (Explorers), Picos d'Europa multi activity trip, and our first Cub Scout International to Dublin... with over 100 Cubs and Leaders going abroad to celebrate the Cubs centenary. And of course

Lancashire Outdoor Activities Initiative (LOAI) And The Anderton Centre

West Lancs Scouts have long been been a partner with the charity LOAI to develop outdoor opportunities for young people throughout Lancashire. This gives us access to Rivington Reservoir, and use of the Anderton Centre.

LOAI/Anderton has a large delivery contract with the National Citizenship Service, and from an NCS survey our charity run outdoor centre was rated amongst the top 5% of UK Outdoor Centres.

In addition, the Centre has a large programme as a Duke of Edinburgh (DofE) Approved Activity Provider, provides DofE Supervisor Training..... and is one of the very few Centres licensed to

capped off by our bi-annual community service and trekking trip to Nepal over Xmas 2016: this year to the Annapurna Sanctuary.

Future plans are equally exciting with destinations that include the 31st APR Jamboree in Mongolia, Canoeing the Algonquin in Canada, Explorer Belt in Finland, Danish Jamboree..... and many more.

In addition to all these exciting trips, the County benefits from two members of MEG having National roles as UK Global Advisers: Steve Morton for the Arab Region of World Organisation of the Scout Movement, and Dick Griffiths for the Asia Pacific Region – contacts emanating from these roles clearly influencing West Lancs Scouts!

Overall, with the drive provided by Steve Morton (ACC International) and the support of the Major Events Group, as a County we continue to provide an amazing array of overseas opportunities for our people, young and old. Steve steps down as ACC (International) this year due to his appointment as County Commissioner. The County is grateful for Steve's input. This role now being taken by Chris Worthington. But because of his interest, Steve will continue to be a member of MEG.

Dick Griffiths
DCC & Chair MEG



deliver the DofE Diamond Challenge (for adults!) with some very large national corporations now on board.

In the last 12 months, LOAI has restructured its Management team and there has been major improvements in the facilities at the Anderton Centre. As well as having a large residential educational client base, They now have a large portfolio of training courses which West Lancs Scouts are very welcome to access.

Dick Griffiths
DCC & Trustee of LOAI



Waddecar Management Committee (WMC)

Last year I was pleased to report that contracts had been placed for the new toilet block at Waddecar, even more pleasing is that this year I'm able to report that not only is the facility now completed and in use, but it's a fantastic facility!! We have worked hard with our contractor Tysons of Blackpool and our Architects, Cassidy & Ashton of Preston during this project and brought it in on time and to budget. If you haven't been to see us for a while then come and have a look at 21st century Scout camping!

Whilst the new toilet block, with its laundry and superb drying room is one major development, we also managed to:

Create a new indoor bouldering wall available all year round

Refurbish and completely update our 30 year old climbing wall

Rebuild Duncan's Diner

Renew the steps to, and install new central heating in, the Jubilee Base

We also continue to focus on making it easy for Groups and Districts to run events at Waddecar and have expanded our activities including more archery and having an activity instructor available during the summer to help with activities and planning your camp or event.

Set next to the River Brock in the beautiful Forest of Bowland Area of Outstanding Natural Beauty, it's little wonder that Waddecar continues to attract many Duke of Edinburgh Award groups, youth groups and schools as well as Scouts from our own County and surrounding areas.

If you haven't been to see us for a while, call in



and see why we are so popular and how we can help you with your Group, District or County event!

Ian Aspden has guided us through this years major development, putting in countless hours reviewing contracts, liaising with architects and contractors and advising me and the committee, and I thank him for his professionalism and commitment – thank you Ian!

Finally I must thank all the members of the committee who give their time and expertise to help our Movement.

Jonathan Abbey
Chair



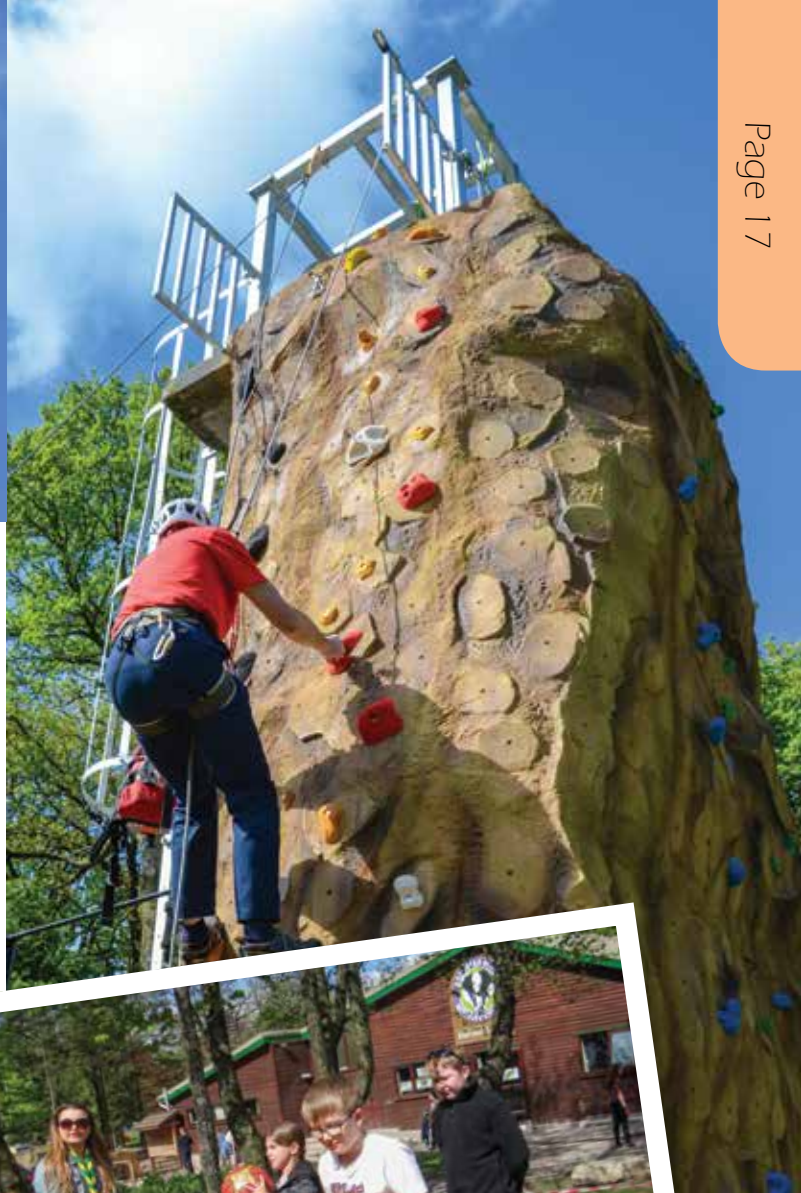
Waddecar Activity Centre

Well, it has been a very industrious year at Waddecar reports Charity King, centre manager. Long laid plans have come to fruition, sketches have popped-up as tangible and delightful things. Now spring and summer have finally arrived, and like a tree rustling its new leaves, we are both relieved and excited to see our new additions come to life!

A major face lift for the climbing tower has made it virtually unrecognisable! Thanks to the work of nationally renowned company King Kong Climbing Walls, and grant funding from both Lancashire Environmental Fund and People's Postcode Lottery, we have been able to achieve this project, and more . . . with the addition of . . . an entirely NEW creation of the Bouldering Room.

As predicted, this has been a massive hit, it just ticks so many boxes: indoors- so any weather and day or night, no permit required, fun and challenging for Beavers through to athletic adults, and it looks very cool indeed.

Of course we must not forget the new toilet block with hot showers and clean loos for all. Our architects, Cassidy & Ashton, have managed to make even a toilet block look quite lovely. And not only is it pretty, but it's warm,



and provides privacy for Leaders with separate facilities, a disabled wet room and a long-desired drying room for wet gear.

Of course all this progress is supported by countless hours of work by our superb team, from writing grant applications to landscaping around the toilet block, and everything in between. These great strides in development wouldn't 'pop-up' without the truly tremendous efforts of our volunteer team.

Words don't do justice to the progress made, so please come and see for yourself. We have Open Days planned in 2016, with more to follow in 2017. Alternatively, just let us know that you are coming for a look around – speak to Mandy or myself on 01995 61336.

Charity King
Activity Centre Manager



Carl and his legacy

Carl Hankinson has come to the end of his term, having been our County Commissioner for the best part of a decade, in fact, it would be ten years in December. But, as we have grown to expect from Carl, he wanted the handover to his successor to be a seamless one conducted the proper way at our County AGM. Fortunately this gives us the opportunity here to reflect on ten years of Carl's leadership in West Lancs Scouts and to celebrate the tremendous amount we have achieved in that time.

It has, by any measure, been an unprecedented period of change both within and outside of Scouting. Ten years ago Facebook was one year old, Twitter was only founded that year, Tony Blair was still Prime Minister and 42% of our current members in West Lancs were not even born!

During this time, Carl has steered our County expertly to what is undoubtedly now a position of great strength. Some might say that our good reputation ten years ago masked a multitude of sins. Others will tell you that West Lancs was considered "ungovernable". Well, Carl



has certainly managed to govern with his clear vision, incisive and decisive leadership, and inspiring example to all around him.

At the risk of this reading more like an obituary than an acknowledgement of thanks, it's important to take this opportunity to mention just a few successes that Carl has achieved during his time as County Commissioner. All of these things will be familiar to some of us, but none of them will be familiar to all of us, such is the

breadth of the challenge of the role, and the way in which Carl has undertaken it.

For some, the significant achievement of Carl's tenure has been the overhaul of our governance; and overhaul is no overstatement. The structure we now have in place to properly run our charity has been a painstaking process led by Carl, with support from others of course, to ensure that we have our house in order. Land registry and boundary issues for our various properties and campsites, bequests and trusts, our lease of Great Tower, a new framework for working with Lancashire County Council and partner organisations, sound financial planning and rigour to ensure we have the resources to fund our



ambitious plans. None of these are the things Carl talks about when he talks about Scouting publicly, but all of these things Carl has led in the background to ensure we can focus on delivering the quality programme our young people crave.

Carl has also overseen the transformation of our "brand" as a Scout County, with the introduction of a consistent look and feel to what we do, from clothing to logos to a communications and marketing team that allow us to promote our programme in the best possible way through the web, photos, video and more. It's easy to forget just what West Lancs Scouts looked like as an organisation ten years ago, pretty out of date!

And speaking of that programme, it would be wrong to think Carl has been distracted with the business of running what is essentially a medium sized company. Our programme across the County continues to go from strength to strength. Carl's passion for International Scouting has been evident during his leadership, with his enthusiasm and support helping to ensure we have an international programme which is the envy of every other Scout County in the UK. Likewise our adventurous activities programme means we're able to offer exactly the sort of activities to our young people that we know they look for and expect from Scouting. Whilst we have had pockets of good practice since long before Carl became County Commissioner, these things are now at the heart of what we do as a County to support Districts and Groups.

Carl has overseen the implementation of many national Scouting initiatives locally in the County, helped of course by the national roles he has held alongside that of County Commissioner. His ability to balance both perspectives, and during more challenging times to provide clear leadership and motivation to his team, has been a hallmark of Carl's time as CC. One area where this has been most apparent is in ensuring the voice of our young people is heard at all levels; West Lancs were the first County in the UK to appoint a County Youth Commissioner and the progress made in ensuring we are "shaped by young people in partnership with adults" has been remarkable and a very real change to the way we operate.

We have had our first Royal Visit from our patron, HRH The Duke of Kent, allowing us to showcase what we do for young people to many influential people around the County. We have also got better at recognising the significant contribution of our adult volunteers. As fellow volunteers Carl has been our biggest champion and the number of awards received by our adult volunteers for good service is now higher than anywhere else in the Country. And it's not just our adults receiving awards. Carl's focus on young people's top awards,

as well as the number of nights away they have access to, have led to a dramatic rise in the number of young people being celebrated at our now regular top award presentation events.

Carl's belief in what we offer as an organisation and his drive to offer it to as many young people as possible, has been the cornerstone of his tenure and this is manifested in one of Carl's greatest legacies, the development project that he has pioneered so passionately. The focus on growth amongst volunteers, along with the move to employ two development officers has been a resounding success. The integration of paid staff alongside volunteers to develop Scouting had the potential to do more harm than good, but through Carl's meticulous management we have achieved ten successive years of growth in the County, taking us to our highest ever total membership this year. Thanks to Carl's vision and determination to make it work, and his ability to motivate others to join him, we have been able to offer Scouting to literally thousands more young people than we otherwise would. What a legacy to leave.

There are lots of things we will miss about having Carl as our CC. Not least the "Hankinsonisms" that the County Team have come to know well. "We don't give birth to eight year olds", "help us keep our shape", and "grease the wheels" are all phrases that will be missed around the table. As will Carl's quick wit, his neatly lined up watch, iPad and phone in front of him, and his ability to say little and speak volumes.

As the County looks to the future, it's bright, and in large part thanks to the significant impact Carl has made in the last ten years.

He has been a friend, a manager, a leader, a supporter, a counsel, an example, an inspiration, a true Scout.

We hope he won't stray too far, but for now at least, Thanks Carl.

*Acknowledgements:
Bernard Pendlebury
& Chris Lomas*



Changing lives and growing our adventure!

What an amazing year! A massive increase of 728 Members at census took us to 12,769 Members across the County, an increase of 6%. This means we are now at our highest ever membership since local records began in 1974 (our previous highest was recorded in 1995 at 12,320). Every volunteer has played a part in our incredible journey from running challenging and adventurous programmes for our youth members; managing or supporting our volunteer teams; or taking on all those background tasks that keep us ticking over such as admin and finance, maintaining our campsites, buildings and equipment, or spreading the word about what we do. Thank you all, it is a fantastic achievement and you should be rightly proud of the part you have played in reaching this incredible milestone.



A special mention must go to Preston District who had a fantastic increase of 322 Members this year with nearly all Groups growing their numbers. They weren't alone with six of our Districts growing this year. Across the County 103 of our Groups grew, with 47 Groups growing by 10 or more Members. In addition we have opened a number of new Groups with 1st Ingol and 10th Fulwood opening during the census period and 20th Blackpool, Crawford Village, 1st Thornton and 1st Poulton opening in the last few months. Four of our Districts saw

growth in their Explorer Scout provision and new Units were opened in Chorley, Lonsdale and Preston.

Our largest growth at an individual Group came from opening 10th Fulwood (Salaam) Scout Group at the Madrasah connected to Masjid-E-Salaam (mosque). At census it recorded 139 youth Members and 32 adults across one Beaver Colony, two Cub Packs and two Scout Troops. Other large increases in membership were seen at Charnock Richard which grew by 38 Members; and Preston Central and 1st Carnforth who grew by 27 Members each.

While the majority of our Groups grew, there were still almost a third of Groups who saw a decline in numbers this year, giving a total loss of 500 Members. If you notice a dip in your numbers, make sure you mention it and see what support is available to help you. It may be that you just need someone who can visit a school and tell the children about Scouting or perhaps, some support to help you make your programme more adventurous. There is lots of advice and help available across the County, let us know what you need.



Waiting list numbers increased at census and we now have more than 350 young people waiting to join Scouting in our communities. Some of these will now have joined their local Group or one of our new Sections, but some will be still waiting to get involved. All of our Districts have enough vacancies across their Groups to easily accommodate these young people, but as ever there is still more we can do to ensure all those children and young people who want to join, are able to, and we continue to look at ways to provide more places.

Our Vision for 2018 is to have 14,000 Members enjoying the opportunities that Scouting across West Lancs has to offer. There is a long way to go if we are to achieve this, but if every Section in our County grew by only three members each during the



Four of our Districts saw





next 2 years, we can easily pass this target.

Our County Development Officers, Andy and Barbara have had a busy year and are well on the way to achieving their targets for this 3 year term of the Development Project. They have faced some challenges with venues proving particularly difficult to access in some areas, this causes delays in planned project timelines and sometimes means we can't offer Scouting where we would like to. However, they continue to bring their enthusiasm, energy and drive to the individual projects, Groups and Units they work with and it is clear to see their knowledge, judgement and

humour is valued by our Group Scout Leaders (GSLs) and District Commissioners (DCs).

Blackpool District have just finished their project working with the Regional Growth and Development Officers, James, Alan and Peter funded by the Youth United Fund (YUF) which supported the opening of new Scouting provision in some of the UK's most deprived areas. Our thanks go to them and the YUF as their assistance meant we opened seven new Sections and obtained substantial start-up funding in some of the more challenging parts of the District.

The support of our local volunteers makes a big difference to the work of both the County and Regional Development Officers, as they help the new volunteers to settle into their role. They share their knowledge, time and experience to give our new teams the confidence they need. In addition, our Districts continue to develop and work on their own projects, which enables us to offer support to more Groups and grow more quickly.

At the start of 2016 Jon Minshull was appointed as Assistant County Commissioner for Growth. His role is focussed on promoting growth and sharing best practice to all Members of the County. So far Jon has been working to share growth success stories through our media channels and has also conducted a County-wide survey to understand the current perception of growth and retention. Over the next year he will be looking to implement a number of suggestions received as part of the survey; hold a series of Growth Forums within the County; continue to promote growth; and support our volunteers through the creation of new resources.

Year 2 of this phase of the County Development Project has been busy, here is a brief overview of what we have achieved so far:

What we said we'd do - growth...

- Open 50 new youth Sections, including 10 new Scout Groups, with 25 Sections; filling gaps in the 6 - 14 year old provision with nine new Sections; opening eight new Explorer Scout Units; and creating eight 2nd Sections at existing Groups.

What we did...

- Opened 37 Sections to date. In addition, work on another 10 Sections is already underway, including eight Explorer Scout Units and two 2nd Beaver Colonies. Another 40 new Section projects have been identified and some of these will start work this term.

How we did it...

- Opened nine new Scout Groups across the County - a total of 19 new Sections;
- Opened nine new Sections where there was a gap in the 6 - 14 provision, including four Beaver Colonies, two Cub Packs and three Scout Troops;
- Opened four Explorer Scout Units;
- Opened five 2nd Sections where demand was high to join a Scout Group and we had a waiting list, including two Beaver Colonies, a Cub Pack and two Scout Troops.



What we said we'd do - support...

- Provide help and guidance to 40 Scout Groups where support is vital for the Group to grow, including ensuring there is an effective Group management structure in place (GSL and Executive Committee); the Group has a development plan; and supporting the Group in increasing the number of young people.

What we did...

- 21 Groups have received help and support from the County Development Officers to enable them to grow.
- Currently an additional six Groups are receiving support.

How we did it...

- Supported Districts to recruit effective managers and supporters, including Group Scout Leaders, District Explorer Scout Commissioners and District Scout Network Commissioners.
- Supported Groups with creating and strengthening their Executive Committee to allow Leaders to focus on providing the programme for the young people. Parent's meetings, family fun nights and clear role descriptions all helped people understand how they could get involved.
- Increased the number of adult volunteers working with our youth section through offering flexible Scouting, parent's rotas, student volunteering placements; strengthening links with colleges and universities, other local voluntary organisations and promoting opportunities on a variety of internet sites – have all helped reach new adult volunteers.
- Boosted youth membership numbers by running school recruitment assemblies followed by activity taster sessions.

What we said we'd do - recruitment...

- Recruit 250 new adults into West Lancs Scouts.

What we did...

- 186 new adult volunteers are working in Groups and Units across the County as a result of this phase County Development Project; plus two new Young Leaders.

How we did it...

- Recruited 115 Leaders and 19 Section Assistants;
- Recruited 15 members for Group Executive Committees;
- Recruited 37 Occasional Helpers.

What we said we'd do - legacy...

- Design and share resources; maintain a store of promotional material;
- Build relationships with GSLs and District Development Teams;
- Revise the content of the training development modules and share methods, resources and best practice.

What we did...

- Expanded how we offer our adults development support and ideas;
- Increased the practical resources available to support our adults with their recruitment and development needs.

How we did it...

- Refreshed the content of the Growing the Movement training for managers and supporters to share best practice and promote available resources;
- Provided support at GSLs meetings, County GSL Day and 'Skills and Chills' events across all Districts, sharing knowledge, running training sessions and flagging new resources;
- Raised awareness of and promoted HQ recruitment resources and recruitment materials.

Back at the start of 2007, when Carl Hankinson took on the role of County Commissioner the County had just achieved two successive years growth and had reached a membership of 9,347. Keen to see the County continue to grow, he started to look at ways he could support the Districts to make sure they had support in place to do this.

He provided comprehensive statistics across the County to show where each District was up to; introduced a 'rule of thumb' Section full figure, which allowed us to look at capacity and vacancies in Sections in a common way; identified gaps in provision, Groups with the biggest growth, and those that had seen large falls in





membership; introduced us to the 'Missing Link' to help us focus on retention, as well as new growth; and set our first target goals with Challenge 2010 to encourage growth in the Districts. All of these statistics have evolved into the common reporting tools we now use across the County after every census, that help us clearly monitor and set our local targets for growth with each District Commissioner.

Looking to the future, Carl and Pete Sturgess (County Principal Officer at that time) pulled together an application to see if the County could get funding from the Development Grants Board for a County Development Project. Not thinking they would be successful that year, they were taken by surprise when the funding was approved, and moved quickly to put plans in place to recruit two County Development Officers and set up a Project Management Committee to support them. In the summer of 2008, the first County Development Project was launched and Carolyn and Barbara came on board.

Carl has always been determined to ensure the project was successful and invested a lot of time and energy, particularly in the early days, to make sure the Districts understood the benefits of using the County Development Officers and the support they could provide. Initially, projects came in a trickle, but as these were successful, more and more projects were identified and a steady stream of work has been in place ever since. At the end of the first 3 years of the project, the County decided to continue with the County Development Project. Carolyn took the opportunity to retire, and Andy joined the team. Now in its 3rd year cycle, day to day management and support of the

Development Officers remains with Carl.

Add in to this, liaising with the Regional Team to make use of the recruitment resource available from them; most recently with the project management of the YUF project work. Then there are the workshops, training and GSL Support Days that he has co-ordinated to ensure support is available for front-line volunteers. Not forgetting the County Development Plan which covers so much more than growth.

Carl's direction, enthusiasm and determination has been the driving force behind the County's growth during his time as County Commissioner. We are now in our 12th year of successive growth and have seen an increase of over 3,400 members in that time. Over two thirds of these are young people enjoying Scouting for the first time, the rest are adults that have now joined our adventure and are enjoying their own 'Scouting Journey', and some of these share their experiences in this report. All of these have joined West Lancs as a direct result of Carl's leadership and the time he has put in to making sure West Lancs is a thriving, growing County.

Yet we must remember that this is only a small part of the work he has done during his time as County Commissioner.

Thank you Carl, you have created a truly amazing legacy for the young people and adults in West Lancs.



Andrew's Scouting Journey...

Andrew Tracey is GSI at 1st Walton-le-Dale, South Ribble. Back in 2008, the Group had a sizeable waiting list for their Beaver Colony. With limited leadership at the existing Colony and no way for the young people to join, the District asked for the County Development Project to open a 2nd Colony at the Group. Contact was made with the parents on the waiting list and the children were invited along to a number of taster events. Five parents came forward, one to support the existing Colony and four took on the challenge of running the new Colony which opened early in 2009. The Group has continued to grow with almost 100 young people attending regularly.

"Due to numbers on the waiting list it was necessary to start an additional Beaver Colony. Parents were asked to assist and I was one of them and before you know where you are - you are leading the Colony!

I've remained involved as it is really rewarding and took on the challenge of Group Scout Leader in 2012. It's good to see the children grow in confidence and skills from when they join to when they leave. It's also good offering something back to the community.

One of my best experiences has been successfully running a number of Family Camps with over 100 Members, mums, dads, siblings attending with very positive feedback at the end and a number of parents coming forward to become Leaders."

Elisabeth and Beckie's Scouting Journey...

Elisabeth Cooke is Beaver Scout Leader and Beckie Herbert is Cub Scout Leader at 1st Catforth in Preston. In 2011, the County were approached by the District to see if it would be possible to open a Scout Group in the small village of Catforth. They had been contacted by a local parent, Elisabeth, keen to see something for her son and his friends to join. She offered to get involved and coaxed other parents to join her. Initial concerns that we may not be able to find enough young people to join with only 65 children in total at the local primary school, were unfounded when 20 children came along to Beavers. Almost 12 months later, they got in touch again and this time Cubs opened with Beckie and other parents taking the lead. They completed the Group by launching Scouts in 2014 and have approx. 60 young people attending across the Sections each week.

Elisabeth says: "I got involved to give my son the opportunity to join Beavers in his local community and last week watched him move up to Scouts; and my daughter is now officially in a turquoise uniform! I am still involved because there is no escape - no seriously because we all get so much out of it and enjoy ourselves too. 5 years has flown by and here we are with all three Sections thriving and a newly coerced GSI, nearly in post (they got me at my weakest when I was 'broken' at camp!)"

Beckie says: "Another parent and I (in a moment of madness) decided to start up 1st Catforth Cubs after they came to move on from Beavers, but didn't have a pack in Catforth to move on to. We are now 4 years old and have loved every minute. From camping to climbing, canoeing to caving us, as Leaders, join the Cubs in all the adventure. The most fulfilling memory so far though is watching and being amazed at the progress of the Cubs as they grow and develop, and move on to Scouts well rounded and mature, I feel that Scouting has played a massive part in this journey."

Peter's Scouting Journey...

Peter Collins is GSI at 4th Blackpool (Grange Park) which opened in early 2013. The County were approached by members of The Cherwell Centre based on the Grange Park Estate as they felt a Scout Group operating there would benefit the young people they supported. Initially they received support from the County Development Project to set up the new Group with the launch of their Scout Section. They then received the support of the Youth United Fund and as a result Cubs opened in 2015, followed by Beavers in 2016. The Group are going from strength to strength with 22 Beavers, 21 Cubs and 28 Scouts meeting in what is considered to be one of the most challenging parts of Blackpool.

"With the help and encouragement of Carl, West Lancs and Blackpool District and latterly the Youth United Fund, 4th Blackpool (Grange Park) was reformed 3 1/2 years ago. We now have over 70 Beavers, Cubs and Scouts and we are growing by the week. Carl's input has been crucial in our development of the young people of this estate, who now have fun and a focus to achieve.

My proudest moment in Scouting so far is when we went to County Rally for the first time and our Scouts won Waddecar's Got Talent as a team performance, winning this changed their whole outlook on their lives."

Susan's Scouting Journey...

Sue Entwistle is a Cub Scout Section Assistant at 12th Lytham St Annes based in Fylde. Back in 2014, the District identified Ansdell as a potential location for a new Group in the area and approached the County for support for a development project. The Group opened in the summer with Beavers and Cubs, and have continued to grow opening Scouts early in 2016. They now have approximately 60 members across the three youth Sections.

I got involved in Cubs to get my children trying outdoor activities and working in a team; I am still involved because I enjoy seeing all the children taking part and learning the values of friendship and team work. My best experience has to be County Rally watching all the children have new experiences and enjoying outdoor life."

Stuart's Scouting Journey...

Stuart Robinson is Explorer Scout Leader at De-La-Roche Explorer Scout Unit in Longton, South Ribble. He got back involved in Scouting through the power of social media when he was approached by Susan Sullivan, District Commissioner at that time. The District had identified a number of areas where they wanted to offer Explorer Scouting more locally to cope with the demand from young people keen to continue their Scouting journey. With Stuart interested in taking the lead at the new Unit, the District led a project to get it up and running and it opened in 2014.

I got involved in Scouting again just over 2 years ago following a lengthy break to focus on my career and family. As a Queens Scout I wanted to get back involved as I felt I still had a lot to offer young people.

We opened an Explorer Scout Unit with approximately 6 young people. The Unit now totals over 30 which I feel is testament to the wide, varied and youth led programme on offer.

In the last 2 years our fantastic leadership team and young people have fund-raised by swimming the equivalent of the Channel; been to Edinburgh; some of the Unit have been to Japan; some are due to go to Mongolia; and we are re-opening the new term with a trip to Dublin. There's been many awards and achievements too, including the Kemi Kazi award at County Explorer Scout Camp!"

Alison's Scouting Journey...

Alison Evans is GSL at Adlington Scout Group, Chorley and is currently Mayor of Adlington. In 2012, the District asked for the support of the County Development Project as numbers at the Group had taken a dip and it was felt there was a real opportunity to grow Scouting in this area. Initially, the project focussed on recruitment of adults and young people, then opening a 2nd Cub Pack in 2013 and a 2nd Beaver Colony in 2015. The Group now has approx. 100 young people attending their six Sections.

I joined Scouts three years ago as a Section Assistant with the Beaver Colony at Adlington Scout Group. I went along to an open evening organised by the Development Team at West Lancs. My son had just started as a Beaver Scout and I was facing redundancy so wanted to try something new. After a few months I was asked to take on the role of GSL. I knew it was a big leap and although others were aware of my limited experience they supported me in rising to the challenges. The role has helped me develop skills and the confidence to take on further challenges and roles in my career and within my local community.

Over three years we have increased from four Sections to six and have over a 100 young people attending every week. Our Leader numbers have never been higher and the highlight of my time in Scouting has to be in July 2016, when our team organised a whole Group Camp at Bibby's Farm for over 80 young people and 20 adults. The planning was detailed and thoughtful, the organisation was thorough and planned down to the minute - great food, varied and engaging bases, even the weather was perfect. Our Beavers, Cubs and Scouts spent Saturday moving around 16 bases in mixed teams. It was awesome!

In part, our camp was made possible by having support to grow from our County Team. So, thank you to Carl for investing in development - it does make a difference. I get to work with young people and adults who do amazing things. That's why iScout!"

West Lancs Scouts Active Support – Flexible volunteering support for our Scouting adventures!

Working as I do outside Lancashire (some call it missionary work!) I am lucky to have frequent opportunities to chat to fellow Scouters from other Counties. I am always proud and delighted to be able to say (OK, brag!) how wonderfully geared up to provide a full range of challenging activities, on land and on water across an amazing range of superb facilities we are.

Whether caving or climbing, bouldering or raft building, sailing or camping, walking or hiking, we provide opportunities for all ages to really test themselves in beautiful surroundings under the watchful eye of superb qualified instructors and coaches.

West Lancs Active Support Units work side by side with Section Leaders throughout the year to deliver a great deal of the support required in order that our young people can taste that sense of freedom and adventure. I am immensely proud of the time and effort our Active Support members put in every year and this year has been no different.

I know we all enjoy being able to tell anyone who'll listen about our amazing 11 straight years of growth and of course we all know very well that one of the main attractions for young people joining Scouting in West Lancs (and staying members!) is our provision of outdoor adventurous activities. The taste for adventure can be acquired early and the support

for our younger Sections is equally as vital for a healthy County as that for the older Sections who look further afield and abroad for their experiences, and it is terrific to see those opportunities opened up to our Beaver and Cub Sections.

All our Active Support Units are committed to ensuring a good supply of Members who are qualified under the adventurous activity permit scheme and we are delighted to be able to offer training leading to nationally recognised qualifications at minimum cost for those who are willing to commit some time to us afterwards to help deliver the adventure and we'd be delighted to hear from anyone who wants to join us.

Of course those also serve with equal importance who support in more sedate roles, because the action can't happen without the organisational and administration to back it up. There are many out there working quietly but diligently to ensure our "I"s are dotted and our "T"s are crossed. Thank you to all, for making my chats at the work coffee machine so much fun!

Ian 'Lonnie' Lonsdale
Active Support Manager



Safeguarding

The Safeguarding Team have had another busy year, ensuring all our adult Leaders undertake their approved safeguarding training at least every five years. Following a successful recruitment, we have been fortunate in expanding our team so that we now have more flexibility in keeping pace with the demand for training. Courses are held regularly throughout the County so if you are unable to attend one in your own District, there is sure to be one in a neighbouring District!

Our Safeguarding courses are intended to be 'safe environments', so please feel free to join in the discussions and ask questions as necessary. Outside of these courses, the Safeguarding Team are always on hand to offer advice and guidance throughout the year; if we don't know the answer straight-away, we will always find out for you!

Expanding our team also means that we can extend delivery of our 'ThinkuKnow' events, working in partnership with Section and

Expedition Leaders to help keep our young people safe on-line; please let any member of the Safeguarding Team know if you would like us to deliver such an event to your Section or team.

Finally, thank you to all who undertake this training to ensure that we all continue to enjoy scouting in a safe but fun environment.

Liz Goldsack
Safeguarding Awareness Co-ordinator



Internal Communications

Another year gone by and the media team moves from strength to strength. West Lancs Plus, our fortnightly e-newsletter has become embedded as our primary channel for internal communication, with several



Districts also benefiting from using the same infrastructure to send out their regular briefings too.

This has helped to reduce information overload and keep information and announcements tidily in one central place.

The team's efforts have been superb over the year, increasing the reach of our output, particularly on social media, and we know for a fact that these efforts have recruited new adults into Scouting, after having seen what fun our adult volunteers experience.

We are looking forward to another busy year and seek to increase the strength of our team with additional people with a flair for photography, videography, graphic design and social media.

Pete Sturgess

ACC (Internal Communications)



Treasurers Report

The County has continued to invest money to improve facilities at Waddecarr, February 2016 saw the completion of the long awaited new toilet block which, as well as providing separate facilities for children and adults, also includes a drying room and laundry. The cost of this new facility was £500,000 and its position on the Training Field means it is easily accessible to everyone. Users of the site will also be pleased to see the new climbing and bouldering facilities which have also been completed this Spring. We were very fortunate to receive grants from the Lancashire Environmental Fund and the Postcode Community Trust which enabled us to provide this new activity at Waddecarr which has already proved very popular, both with our visitors and local Groups who are visiting Waddecarr in the evening to supplement their Scouting activity programme.

We no longer receive any regular grant funding and have had to look at alternative ways to help the County achieve its aims. Hopefully the successful applications that funded the majority of the new climbing facility will help lead the way for future projects.

Towards the end of the financial year we received a kind bequest that we are very grateful for and which will be used for the good of the County.

The County updated the reserve policy in 2015 in line with the aspirations of the Vision 2018 Plan. The reserves policy is such that the Charity's unrestricted funds are held in the General Fund and Adventure Trust Fund as set out on the balance sheet and notes to the financial statements. Amounts in the General Fund are primarily tied up in property and equipment used in the County Programme or tied up in assets to generate an income. The Adventure Trust fund is held to promote the challenging expeditions organised periodically by the County for young people in the Groups and Units within the County.

The Trustees engaged Brooks MacDonald as investment managers who operate within guidelines agreed with the Trustees. The investment managers have been asked to consider social, environmental and ethical criteria when managing the portfolio. We would not wish to hold any investments that would be to the detriment of Scouting, although the managers are mindful that their prime duty is a financial one. The investment objective is to provide sufficient growth to protect the fund against the effects of inflation in the medium to long term. This is subject to change should there be any requirement

for large capital outlay. The Trustees accept that to achieve both long term capital growth and a real return over inflation the fund will be subject to the risks associated with asset backed investments and investing in business through loans and equity holdings. The Trustees are not averse to the concept of an element of investment risk but wish the fund to be balanced to reduce the overall effect of that risk. At the close of the financial year the portfolio of listed investments was valued at £1,007,956 (2015: £1,053,426) and in addition our investment managers held cash for future dealing of £67,431 (2015: £48,290). From the end of March 2015, investment markets have experienced a number of turbulent periods to finish (on the whole) negative for the 12 months. Whilst equity and fixed interest markets recovered somewhat into the end of 2015, markets were again thrown into turmoil following the oil price crash (from \$110 at peak to \$28 in January) and worries over a US recession. These worries proved to be unfounded in the short term, with the oil price stabilising around \$50 and the macroeconomic data improving out of the US. Markets again rallied from oversold levels into the end of March, though this was more focused on the more cyclical sectors (commodities, financials) which were at extreme valuations versus more defensive equities.

The Trustees have engaged Charles Parker Bennett to manage the investment properties, collect the rents and supervise any necessary maintenance work on behalf of the charity, in accordance with guidelines agreed with the Trustees. The investment properties are held both to provide income through the rents and also for their long term capital growth. The investment properties were formally revalued in March 2014 for the sum of £902,500, in line with our triennial valuation policy.

WLCSC wouldn't be as successful as it is without all the voluntary help that is freely given, we are so fortunate to have so many volunteers giving their time selflessly for the benefit of Scouting in West Lancs. Our volunteers help in a variety of different ways and it is all very much appreciated. The County couldn't run effectively without the large team of people that aren't involved in "front line" Scouting, there is a huge team of District and County personnel that work tirelessly behind the scenes to ensure young people in West Lancs get the best Scouting experience possible and we are very proud that the Chief Scout has recognised so many of our Members in the annual St George's Day awards.

Cath Joyce
County Treasurer

Summary Financial Statement

Summarised Statement of Financial Activities for the year ended 31 March 2016

	2016 £	2015 £
Incoming resources		
Donations, grants, and contributions	50,079	29
Activity centres income	149,669	168,228
Surplus on membership subscriptions	4,597	4,355
County and international events	130,516	307,408
Scouting activities, training and sections	86,343	98,252
Miscellaneous income	14,153	7,849
Rental and investment income	64,291	59,277
Interest	17,541	25,290
	<u>517,189</u>	<u>670,688</u>
Resources expended		
Staff costs	122,498	123,522
Costs of generating funds	16,579	11,049
Activity centres operating costs	72,484	76,167
Depreciation of assets	35,047	30,719
County and international events	127,686	284,588
World Scout Youth Event and other events	8,000	12,000
Grant related expenditure	61,776	-
Scouting activities, training & sections	104,104	125,048
Management, administration and other costs	50,162	50,446
	<u>598,336</u>	<u>713,539</u>
Net outgoing resources for the year	(81,147)	(42,851)
(Losses)/Gains on listed investments	(33,084)	73,869
	<u>(114,231)</u>	<u>31,018</u>
Net movement in funds	(114,231)	31,018
Total funds brought forward	3,784,787	3,753,769
	<u>3,670,556</u>	<u>3,784,787</u>
Total funds carried forward	3,670,556	3,784,787

Summarised Balance Sheet as at 31 March 2016

	2016 £	2015 £
Fixed assets (inc rental properties)	1,880,320	1,444,626
Listed investments and share dealing funds	1,075,387	1,101,716
	<u>2,955,707</u>	<u>2,546,342</u>
Current assets	871,861	1,346,945
Less: Current liabilities	(157,012)	(108,500)
	<u>714,849</u>	<u>1,238,445</u>
Net current assets	714,849	1,238,445
Net assets	<u>3,670,556</u>	<u>3,784,787</u>
Funds (all unrestricted)		
General	3,648,139	3,764,339
Adventure Trust	22,417	20,448
	<u>3,670,556</u>	<u>3,784,787</u>

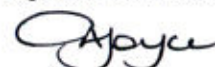
Statement of the Trustees

The Trustees report and financial statements were approved by the Trustees and signed on their behalf on 14 July 2016. They will be submitted to the Charity Commission after the Annual General Meeting.

The full Trustees' report, audit report and financial statements, which contain the full details of the financial affairs of the charity as at 31 March 2016, may be obtained from:

The County Secretary
West Lancashire County Scout Council
Waddecar Scout Activity Centre
Snape Rake Lane, Goosnargh
Preston, Lancashire, PR3 2EU

Signed on behalf of the Trustees



CA Joyce FCCA
County Treasurer



MA Simpson
County Chair

Independent Auditor's Report

We have examined the charity's summary financial statement for the year ended 31 March 2016. This report is made solely to the trustees, as a body, in accordance with the Charities Act 2011 and United Kingdom Generally Accepted Accounting Practice. To the fullest extent permitted by law, we do not accept or assume responsibility to anyone other than the charity and the trustees as a body, for our audit work, for this report or the opinions we have formed.

Respective responsibilities of the trustees and auditor

The trustees are responsible for preparing the trustees report and annual financial statements. Our responsibility is to report to you our opinion on the consistency of the summary financial statement with the annual financial statements.

Basis of Opinion

We conducted our work in accordance with bulletin 2008/03 "The auditors' statement on Summary Financial Statements" issued by the Auditing Practices Board for use in the UK. Our report on the charity's full annual financial statements describes the basis of our opinion on those financial statements.

Opinion

In our opinion the summary financial statement is consistent with the trustees report and annual financial statements for the year ended 31 March 2016 and complies with the applicable requirements of the Charities Act 2011 and United Kingdom Generally Accepted Accounting Practice.



McMillan & Co LLP
Chartered Accountants & Statutory Auditor
28 Eaton Avenue, Matrix Office Park, Buckshaw
Village, Chorley, Lancashire, PR7 7NA
14 July 2016

ADULT AWARDS SINCE LAST REPORT

ST GEORGE'S DAY AWARDS - APRIL 2016

SILVER WOLF

"for services to Scouting of the most exceptional nature"

Joan Swan	Blackpool
Stewart Swan	Blackpool

BAR TO THE SILVER ACORN

"for further distinguished service to Scouting"

Ian Holt	South Ribble
Jacqueline Lee	South Ribble

SILVER ACORN

"for distinguished service to Scouting"

Pete Sturgess	County	Elizabeth (Liz) Roberts	Ormskirk
Warren Frost	Preston	Philip (Phil) Rowett	Preston
Joseph (Joe) Singleton	Preston	Paul Turner	Preston

OTHER AWARDS SINCE LAST REPORT

CHIEF SCOUTS COMMENDATION FOR MERITORIOUS CONDUCT

Sarah Heywood	Assistant Cub Scout Leader	Chorley
---------------	----------------------------	---------

BAR TO THE AWARD FOR MERIT

Peter (Pete) Beesley	Chorley	Clifford (Barry) Matthias	Chorley
Kevin (Kev) Day	County	James (Jim) Hunter	County
Catherine (Cath) Joyce	County	Steven (Steve) Mather	County
Jack McGrath	County	Philip (Phil) Acklam	Preston

AWARD FOR MERIT

Colin Beesley	Chorley	Jaqueline Blades	Chorley
Lisa Clifford	Chorley	David Evans	Chorley
Philip (Phil) Fairclough	Chorley	Patricia (Pat) Hamm	Chorley
Richard Charnock	County	Nicholas (Nick) Kasmir	County
Christopher (Chris) Lomas	County	Christine (Chris) McGrath	County
Robert (Rob) Millington	County	Andrew (Andy Nev) Neville	County
Elizabeth Cardwell	Fylde	Graham Cardwell	Fylde
Margaret Wilson	Fylde	Janet Bradshaw	Lonsdale
Stewart Clark	Lonsdale	Robert Gill	Lonsdale
Helen Holmes	Lonsdale	Anne Haythornthwaite	Lonsdale
George Long	Lonsdale	Patricia Nelson	Lonsdale
Deborah Smith	Lonsdale	Janet Stoves	Lonsdale
John Stoves	Lonsdale	Amanda (Mandy) Sweet	Lonsdale
Stephen Sweet	Lonsdale	Margaret Standing	Lonsdale
Fiona Weeton	Lonsdale	William Duncan	Ormskirk
Stephen Edmunds	Ormskirk	Ashley (Ash) Green	Ormskirk
Nora Harper	Ormskirk	Alex Lyon	Ormskirk
Max Lyon	Ormskirk	Julie Malone	Ormskirk
Colin Marshall	Ormskirk	Linda Nixon	Ormskirk
David Redwood	Ormskirk	Andrew Simpson	Ormskirk
Yvonne Greenwood	Preston	Peter Hewertson	Preston
Alan Jackson	Preston	Carl Lawler	Preston

Ian Mulholland	Preston	Kevin Parker	Preston
Stephen (Steve) Pike	Preston	Michael (Mick) Smyth	Preston
Roy Swarbrick	Preston	John Woods	Preston
Janet Anderson	South Ribble	Ben Clayton	South Ribble
Julie Fenton	South Ribble	Roy Ripley	South Ribble
Darren Wilson	South Ribble	Wieslaw (Tony) Wojnarowski	South Ribble
Peter Bird	Wyre	Stephen Bowden	Wyre
Kathryn Burn	Wyre	Karen Kennedy	Wyre
Amanda (Mandy) Ramsden	Wyre	Richard (Rick) Ramsden	Wyre
Matthew Roberts	Wyre		

CHIEF SCOUTS COMMENDATION FOR GOOD SERVICE

Elizabeth Baker	Chorley	Peter Baker	Chorley
Tammy Finnigan	Chorley	Alistair Hall	Chorley
Paul Leadbetter	Chorley	Andrew Lewis	Chorley
Andrew Locke	Chorley	Stephen Mellor	Chorley
Joanne Millington	Chorley	Lynda Mutch	Chorley
Kenneth (Ken) Rutter	Chorley	Anthony Waine	Chorley
Darrell Woodward	Chorley	Robert (Bob) Aspland	County
Matthew (Matt) Harwood	County	James Hume	County
Matthew Jones	County	Sarah Jones	County
David (Dave) King	County	Colin Monks	County
Sara Penwarden	County	Neil Ralph	County
Jane Swann	County	Michael Tax	County
Janet Thompson	County	David Webster	County
Alan Martin	Fylde	Lynn Webster	Fylde
Mark Bleasdale	Lonsdale	Beverley Davis	Lonsdale
Valeria (Val) Foster	Lonsdale	Barbara Holt	Lonsdale
Judith Hunter	Lonsdale	Vincent Lace	Lonsdale
Moiria Mason	Lonsdale	Sylvia Myall	Lonsdale
Jonathan Orton	Lonsdale	Nicola Orton	Lonsdale
Philip Swift	Lonsdale	Deborah Thackrah	Lonsdale
Richard Woods	Lonsdale	Helen Broady	Ormskirk
Helen Coakley	Ormskirk	Frank Edgerton	Ormskirk
Charles Frankland	Ormskirk	Lynn Fulton	Ormskirk
Ulrike Halliwell	Ormskirk	Michael Redwood	Ormskirk
Paula Slobin	Ormskirk	Kevin Santi	Ormskirk
Karen Tucker	Ormskirk	Claire Wormald	Ormskirk
Michael Cushing	Preston	Andrew Lether	Preston
Simon Waywell	Preston	Stephen Williams	Preston
Joanna Beaman	South Ribble	Rebecca Churchill	South Ribble
Sarah Gunning	South Ribble	Michelle Iddon	South Ribble
Andrew Tracey	South Ribble	Anne Anthony	Wyre
Kimberley Ashton	Wyre	Simeon Black	Wyre
Hazel Brindle	Wyre	Mark Carter	Wyre
Janet Cross	Wyre	Stephen Faill	Wyre
Jennifer Gornall	Wyre	Michael Gornall	Wyre
Andrew Johnstone	Wyre	Mark Johnstone	Wyre
Sian Joyce	Wyre	Clare May	Wyre
Anne McCann	Wyre	Diane Meadows	Wyre
Catherine Salisbury	Wyre	Stephen Thompson	Wyre
Janette (Jan) Townley	Wyre		

County President

Mrs Gail Stanley MBE, JP, DL

County Vice Presidents

Mr Roy Fisher MBE, JP, DL

Mrs Jean Frew

Mr Tom Frew

Mr Bill Hargreaves

Mr Michael Loomes

Mr Colin Ovenden MBE

Mr Bernard Pendlebury

Mr Brian Woodburn

Mr Rex Wolstenholme

County Trustees

Mr Carl Hankinson

Mr Mike Simpson

Dr Tony Andrews

Mr Mike Smith

Mrs Cath Joyce

Mr Max Lowe

Mr Jonathan Abbey

Mr George Lowe

Mr Jim Hunter

Miss Julie Paton

Mr Oliver Wood

Mr Chris Worthington

Mr Steve Williamson

Mr Jim Banks

Mr Duncan Cairns

Mr Craig Dewar

Mr Chris Nevill

Mr Andrew Hobson

Mr Ian Holt

Mr David Simpson

County Commissioner & Chair of the County Team

County Chairman

Deputy County Chairman

County Secretary

County Treasurer

Chair - Finance & Fund Raising Committee

Chair - Waddecarr Management Committee

Deputy County Commissioner

Chair – Appointments Committee

County Scout Network Commissioner (to 31st December 2015)

Scout Network Representative (also County Youth Commissioner)

Scout Network Representative

County Trustee for Blackpool

County Trustee for Chorley

County Trustee for Fylde

County Trustee for Lonsdale

County Trustee for Ormskirk

County Trustee for Preston

County Trustee for South Ribble

County Trustee for Wyre

County Officials

Mr George Lowe

Mr Paul Harris

Dr Chris Lomas

Mr Dick Griffiths

Deputy County Commissioner

Deputy County Commissioner (to 17th October 2015)

Deputy County Commissioner (from 1st January 2016)

Deputy County Commissioner

County Employees

Sandra Sowerbutts

Charity King

Mandy Sweet

Gary Pendlebury

Barbara Hughes

Andy Marsden

County Admin /Finance Manager

Waddecarr's Centre Manager

Bookings & Administration

Waddecarr's County Maintenance Officer

County Development Officer

County Development Officer

Other Officials

Mr Andrew Corrie

Ms Michelle Swain

Regional Commissioner for North West England

Regional Development Manager for North West England

County Personnel – Volunteers (as at 1st August, 2016)

VOLUNTEERS

COUNTY OFFICIALS & COMMISSIONERS

County Commissioner	Carl Hankinson	County Chairman	Mike Simpson
Deputy County Commissioner	George Lowe	Deputy County Chairman	Tony Andrews
Deputy County Commissioner	Dick Griffiths	County Secretary	Mike Smith
Deputy County Commissioner	Chris Lomas	County Treasurer	Cath Joyce

ASSISTANT COUNTY COMMISSIONERS (ACC)

ACC Beaver Scouts	Cath Hargreaves	ACC External Communications	Matthew Harwood
ACC Cub Scouts	Ann-marie Fisher	ACC Internal Communications	Pete Sturgess
ACC Scouts	Robert Millington	ACC Growth	Jon Minshull
ACC Explorer Scouts	Kerry Harrison	County-wide Training Manager	Joan Swan
ACC Scout Network	Julie Paton	Local Training Manager (County)	Jack McGrath
Scout Active Support Manager	Ian Lonsdale	ACC Adventurous Activities	Paul Sanday
ACC International	Chris Worthington	ACC Scouting Activities	Alan Venn
ACC Adult Support	Fiona Jackson	County Youth Commissioner	Oliver Wood

DISTRICT COMMISSIONERS (DC)

Blackpool	Victoria DaSilva	Ormskirk	Richard Charnock
Chorley	Steve Morton	Preston	Andrew Hobson
Fylde	Duncan Cairns	South Ribble	June Holt
Lonsdale	Craig Dewar	Wyre	Ian Porteous

COUNTY ACTIVITIES TEAM

Activity Permit Scheme	Stuart Dean	Nights Away	Neil Roberts
Abseiling / Climbing	Geoff Lyons	Orienteering	TBC
Air Activities	Ian Grace	Pioneering	TBC
Archery	Phil Fairclough	Paddle Sports	Stuart Dean
Backwoods	Alan Cornforth	Sail Sports	Kevin Day
Caving	Rachel Platt	Shooting	Leon Pascoe
Mountain Biking	Pete Willingham	Snow Sports	Dick Griffiths
		Technology	Steve Williamson

COUNTY ADVISORS

Asset Manager	David King	Photography	Sarah Yeoman
Human Resources	Jill Dean	Videography	James Hulme
Buildings Safety	Ian Holland	Information Technology	Chris Gibson
Safeguarding	Liz Goldsack	Insurance	Colin Monks
Webmaster	James Phillips	Branding	Ryan McKeown
Internal Communications	Chris Gibson	Marketing	Andy Marsden

COUNTY SCOUTERS

Beaver Scouts	Jo Bearman	Scouts (continued)	Nick Kasmir
	Liz Goldsack		
	Fiona Jackson	Explorer Scouts	Simon McGlen
	Judith Jamieson		Lee McNulty
Cub Scouts	Tom Gibson	Scout Network	Jenny McDonald
	Bev McMullen	Queen's Scout Award Admin	Emma Hardacre
	Michael Tax	Duke of Edinburgh's Award Advisor	Bob Aspland
	Andy Walton	Duke of Edinburgh's Award Admin	Mary Carrington
Scouts	Mark Finnigan	Duke of Edinburgh's Award	Paul Gasgarth
	Ian Illingworth	(Expedition Coordinator)	

COUNTY COMMITTEE CHAIRS

County Executive	Mike Simpson	County Team	Steve Morton
Finance & Fund Raising	Max Lowe	Waddecar Management	Jonathan Abbey
Staffing	Mike Simpson	Appointments	Jim Hunter
Joint Scout Counties	Chris Creelman	Programme & Training	Chris Lomas
World Scout Youth Events	Richard Charnock	Major Events	Dick Griffiths
		Awards	George Lowe

COUNTY ADMINISTRATORS

County Archivist	Michael Loomes	County Administrator	Anne Clark
Training Course Administrator	Marion Yardley	County Administrator	Maggie King
Presentations Manager	David Thornton	County Administrator	Judith Jamieson

West Lancashire County Scout Council

Legal and Administrative Details

Registered Charity Number	521712
Tax Exemption Number	X89058
Governing Instrument	The Policy, Organisation and Rules of the Scout Association by authority of a Royal Charter dated 4th January 1912.
Aims	<p>The Aim of the Association is to promote the development of young people in achieving their full physical, intellectual, social and spiritual potentials as individuals, as responsible citizens and as members of their local, national and international communities.</p> <p>The method of achieving the Aim of the Association is by providing an enjoyable and attractive scheme of progressive training, based on the Scout Promise and Law and guided by adult leadership.</p>

Principal Bankers

The Royal Bank of Scotland plc
97 Fishergate, PRESTON, Lancashire PR1 2DP

Investment Managers

Brooks McDonald
1 Marsden Street, Manchester M2 1HW

Property Advisors

Charles Parker, Bennett & Co
17/18 Cannon Street, PRESTON, Lancashire PR1 3NR

Legal Advisors

Napthen Solicitors
7 Winckley Square, PRESTON, Lancashire PR1 3JD

Auditors

McMillan & Co
28 Eaton Avenue, Matrix Office Park, Buckshaw Village, CHORLEY, Lancashire PR7 7NA

Principal Address

West Lancashire County Scout Office
Waddecar Scout Camp, Snape Rake Lane, Goosnargh, PRESTON PR3 2EU
Email: countyoffice@westlancsscouts.org.uk
Web site: www.westlancsscouts.org.uk
Phone: 01995 61336 Fax: 01995 61978

Comparison by Year

	2003	2004	2005	2006	2007	2008	2009	2010	2011	2012	2013	2014	2015	2016	%change
County only people	178	226	226	255	196	223	211	214	187	180	217	242	224	152	-32.10%
Blackpool	1217	1097	1036	1041	989	1059	1065	1146	1087	1128	1034	1121	1121	1172	4.60%
Chorley	783	761	721	827	827	944	1023	1077	1077	1097	1104	1472	1552	1729	11.40%
Fylde	786	764	716	716	763	784	793	817	780	787	850	896	935	953	1.90%
Lonsdale	1226	1178	1255	1286	1299	1202	1199	1336	1400	1396	1405	1487	1629	1834	11.90%
Ormskirk	1303	1279	1343	1321	1324	1456	1472	1544	1601	1612	1620	1691	1604	1758	9.60%
Preston	1296	1278	1249	1287	1347	1418	1462	1496	1579	1632	1645	1682	1648	1970	19.50%
South Ribble	1729	1661	1828	1892	1928	2015	2058	2186	2203	2238	2334	2442	2369	2304	-2.70%
Wyre	917	828	760	722	770	742	778	895	874	901	933	945	959	897	-6.50%
District Totals	9257	8846	8908	9092	9247	9620	9850	10497	10524	10791	11015	11736	11817	12617	6.76%
Number of Groups	163	158	156	154	148	147	145	150	148	148	147	150	157	154	-2.00%
Beaver Scouts	2175	2068	2061	2134	2131	2259	2246	2486	2528	2502	2558	2729	2771	2800	1.00%
Cub Scouts	2730	2600	2540	2613	2540	2578	2710	2839	2810	2923	2881	3146	3816	3213	0.80%
Scouts	1932	1818	1840	1882	1992	2124	2207	2277	2309	2297	2390	2497	2534	2555	0.80%
Venture Scouts	110	0	0	0	0	0	0	0	0	0	0	0	0	0	0.00%
Explorer Scouts	299	459	544	510	540	638	660	690	765	844	889	981	968	986	1.90%
Scout Network	120	131	131	165	110	106	104	110	97	67	70	69	59	77	30.50%
Network regd elsewhere	46	37	63	64	113	98	96	64	58	92	91	83	94	421	304%
Active Support	189	226	227	205	206	209	229	216	212	218	226	241	237	318	34.20%
Total Scout County	9435	9072	9134	9347	9443	9843	10061	10711	10788	10971	11142	11978	12041	12769	6.00%

WHAT PEOPLE REALLY THINK OF SCOUTING



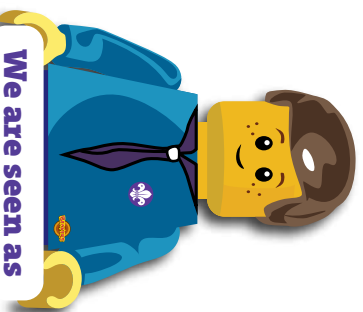
There is strong support for informal education

79%



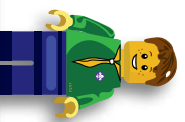
believe it's very important for children to have structured out of school activities

We have high awareness

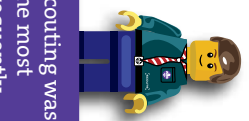


We are seen as

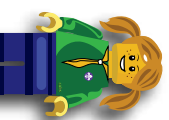
- Inspiring
- Practical
- Challenging
- Reputable
- Positive
- Friendly
- Established
- Trustworthy
- Welcoming



70% of the public say we are about challenging activities and citizenship



Scouting was the most frequently named out of school activity (17%) for young people



We are seen as the UK's most practical charity, 14% above average

70%

Trusted



68%

trust Scouting mostly or a great deal

Our potential support is growing (time and money)



44%

of the general public would like their children to join the Scouts

39%

of 18-25 year olds would consider supporting Scouting

34%

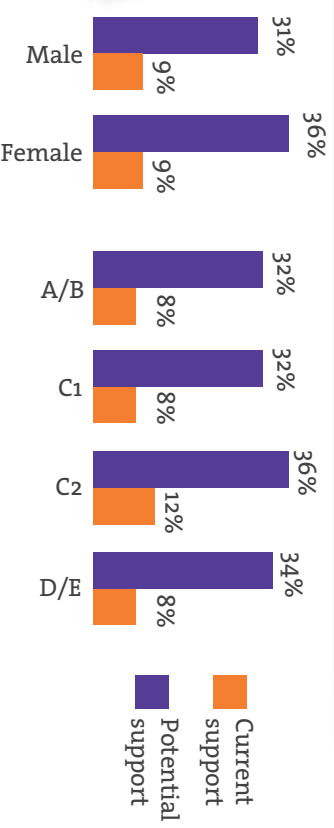
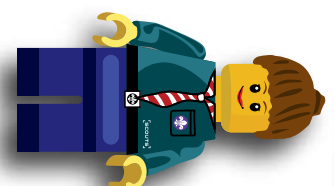
More people would consider supporting us in 2013 (34%) than in 2012 (33%)

74%

of the public believe we provide a safe place for young people to have fun and adventure



Our biggest potential support is from 18-25 year olds, girls, women and from C2 and D/E social grades



Perception of our biggest challenges

59%

1. Shortage of adult volunteers

53%

2. Competition from other activities

52%

3. Concerns about child protection

42%

4. Costs for parents

37%

5. Time-poor parents